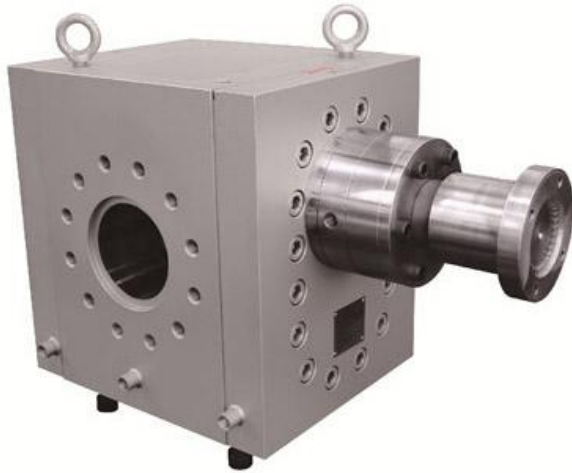


产品介绍 Product Introduction



D系列管道泵

D系列管道泵主要用于聚合物流层中的中高粘度介质的平稳增压输送。加热方式主要为导热油加热。适用于PET、PBT、PA、PC、PS、SAN、ABS、HIPS、PP、PE、POM等工艺中。

技术参数

泵体: 高温工具钢, 不锈钢, 铬镍合金钢
齿轮: 渗氮钢, 不锈钢, 其他材料可指定
齿形: 为直齿、斜齿或人字齿
滑动轴承: 高温工具钢, 特种材料及涂层
轴封: 螺旋密封, 填料密封, 螺旋+填料密封, 其他组合密封
加热系统: 导热油加热
规格/流量范围: 0.5CC - 12000CC

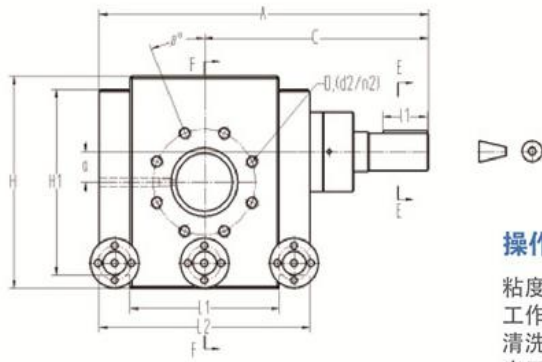
ZB-D Series Pipeline Pump

ZB-D series pipeline pump is mainly used for stabilizing, pressurization and transportation of medium or high viscosity medium from the polymer flow layer. This series of melt pump adopts conduction oil heating, and applies to PET, PBT, PA, PC, PS, SAN, ABS, HIPS, PP, PE, POM, etc.

Technical Parameter

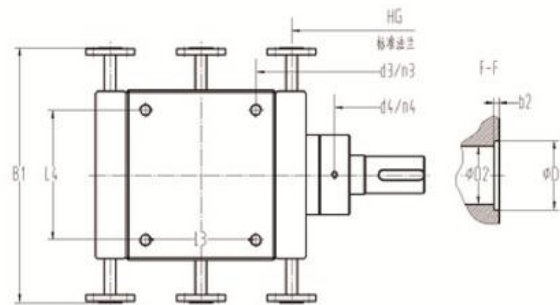
Material for Melt Pump Body: High Temperature Tool Steel, stainless steel or Chromium-nickel Steel
Material for Gear: Nitrided Steel, Stainless Steel (Optional)
Gear tooth types: Straight, Helical or Herringbone
Material for Sliding Bearing: High Temperature Tool Steel, Special Material or Coating
Shaft Sealing: Spiral Sealing, Packing Sealing, Spiral sealing and Packing Sealing or other Combined Sealing
Heating System: Heating Medium or Conduction Oil Heating
Model/Volume Range: 0.5CC - 12000CC

产品介绍 Product Introduction



操作参数

粘度: $\leq 40000 \text{ Pa}\cdot\text{s}$
 工作温度: $\leq 400^\circ\text{C}$ (750°F)
 清洗温度: $\leq 450^\circ\text{C}$ (850°F)
 出口压力: $\leq 40\text{MPa}$ ($6,000\text{psi}$)



Operating Parameter

Viscosity: $\leq 40000 \text{ Pa}\cdot\text{s}$
 Working Temperature: $\leq 400^\circ \text{C}$ (750°F)
 Cleaning Temperature: $\leq 450^\circ \text{C}$ (850°F)
 Outlet Pressure: $\leq 40\text{MPa}$ (6000psi)

